

ISO 1552
PNEUMATIC CYLINDERS
PAC-Y SERIES Ø32 - Ø125





PAC-Y SERIES

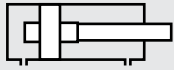
ISO 15552 - Ø32 - Ø125

CUSHIONING CYLINDER

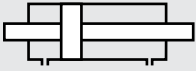
ELOXAL PLATE AND SPECIAL ROD SEAL PROVIDING HYGIENE AND LONG WORKING LIFE.



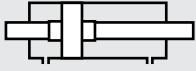
PAC: DOUBLE ACTING CYLINDER



PAC-Y: DOUBLE ACTING CYLINDER WITH CUSHIONING



PAC-D: DOUBLE ACTING CYLINDER WITH DOUBLE ROD



PAC-YD: DOUBLE ACTING CYLINDER WITH CUSHIONING AND DOUBLE ROD

Example of order:

| | | | |
|--------------|-------------------|--------------------|-------------------------------|
| <u>PAC-Y</u> | <u>050-0100</u> | <u>SF</u> | <u>M2</u> |
| Product Code | Cylinder Ø Stroke | Cylinder Mountings | Variants from Standard System |

VARIANTS FROM STANDARD SYSTEM:

- R1: Stainless Steel Piston Rod (SS 304-SS 316)
- R5: Piston Rod as CK45 (Hard chrome plated)
- M1: Extended male Piston Rod Thread
- M2: Female Piston Rod Thread
- M3: Special Piston Rod Thread
- M4: Extended Piston Rod
- K1: Seals for Max. 150°C (Viton)
- K2: Piston Rod Seal NBR + PA
- K3: Seals NBR
- K4: Piston Rod Seal Viton

Force:

| Cylinder Ø mm | Rod Ø mm | Thrust and traction forces(6 Bar) | |
|---------------|----------|-----------------------------------|--------------------|
| | | Thrust Force (N) | Traction Force (N) |
| 32 | 12 | 482 | 415 |
| 40 | 16 | 754 | 633 |
| 50 | 20 | 1178 | 990 |
| 63 | 20 | 1870 | 1682 |
| 80 | 25 | 3016 | 2721 |
| 100 | 25 | 4712 | 4418 |
| 125 | 32 | 7363 | 6881 |

Working Fluid:

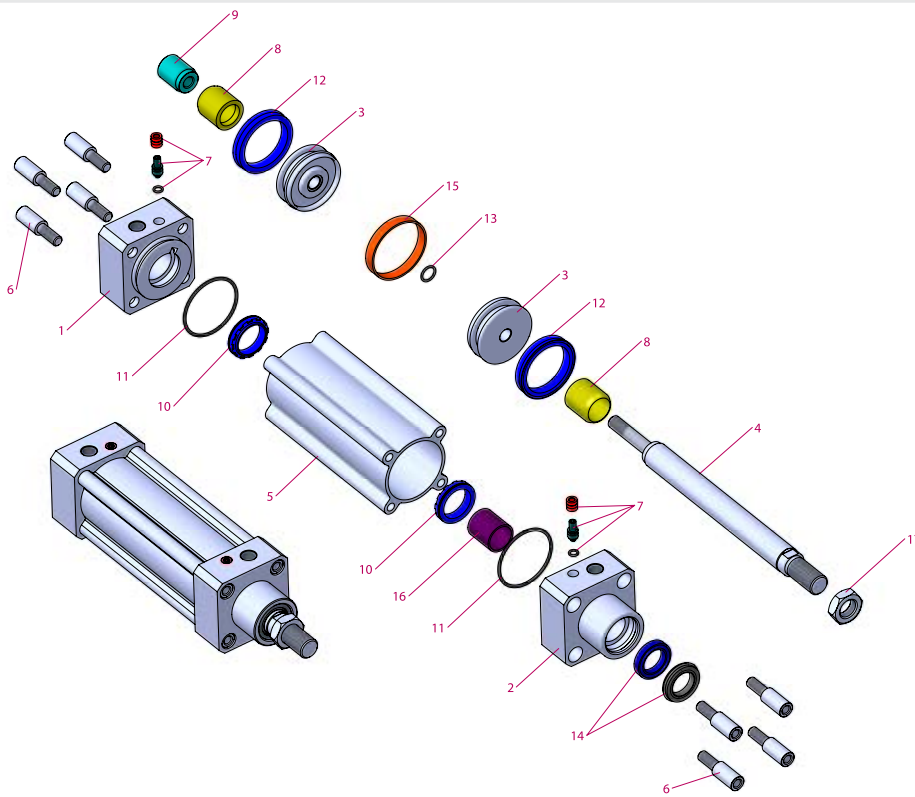
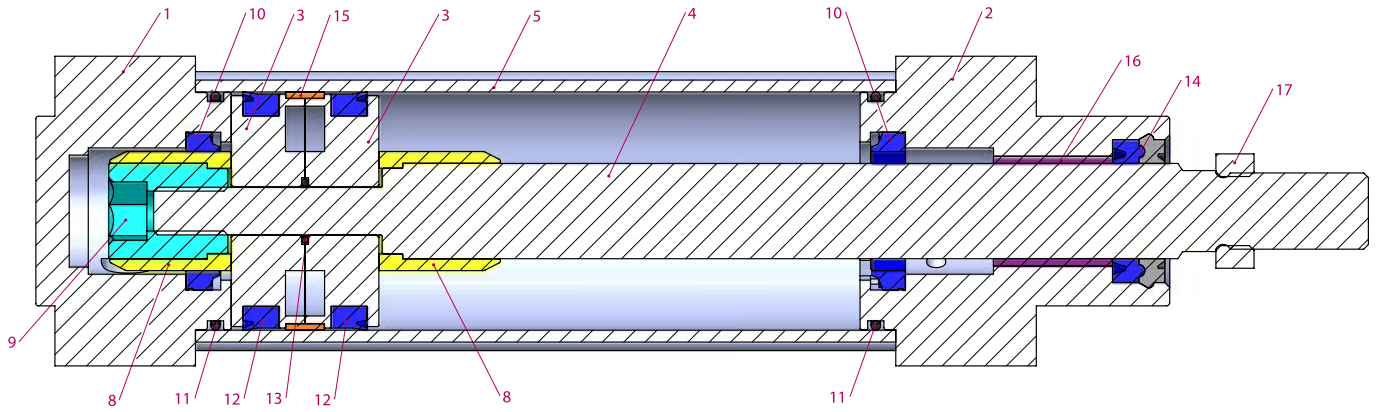
Filtered and lubricated air

Operating Temperature Range:

NBR + Polyurethane (PU): (-20°C) - (+80°C)
 Viton (FKM) : (-30°C) - (+150°C)

Max. Work Pressure:

10 Bar



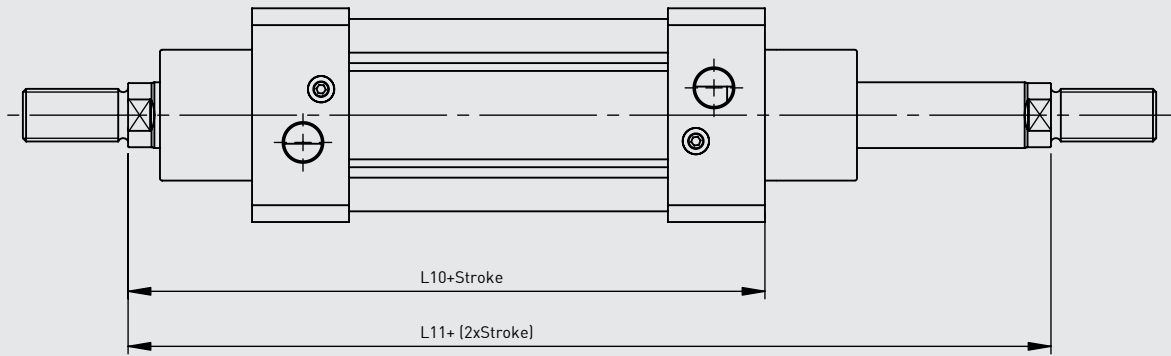
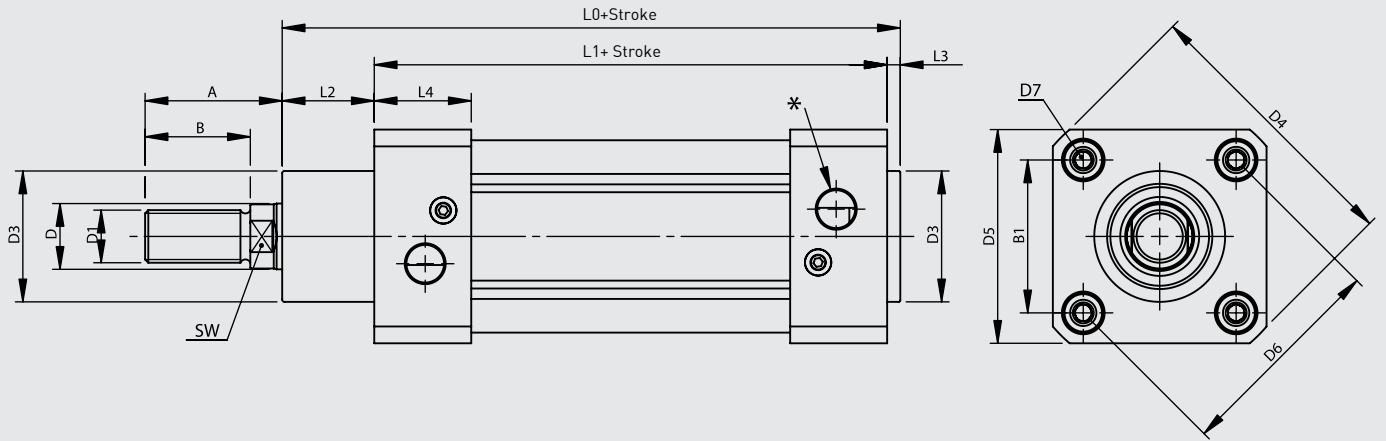
| No | MATERIAL NAME | CHARACTERISTIC | PC. |
|----|------------------------|------------------------------|-----|
| 1 | Rear Head | 6082 Al. + Eloxac Plated | 1 |
| 2 | Front Head | 6082 Al. + Eloxac Plated | 1 |
| 3 | Middle Piston | Aluminium | 2 |
| 4 | Piston Rod | X20 Cr13 Hard Chrome Plated | 1 |
| 5 | Tube | Al Mg Si 0,5 + Eloxac Plated | 1 |
| 6 | Bolt | Stainless Steel | 8 |
| 7 | Cushioning Screw | Brass+AISI 303 NBR | 2 |
| 8 | Cushioning Plastic | Polyacetal | 2 |
| 9 | Cushioning Fem. Thread | Galvanized Steel | 1 |
| 10 | Cushioning Seal | PU | 2 |
| 11 | Head O-ring | NBR | 2 |

| No | MATERIAL NAME | CHARACTERISTIC | PC. |
|----|----------------------|-----------------|-----|
| 12 | Piston Seal | PU | 2 |
| 13 | Middle Piston O-ring | NBR | 1 |
| 14 | Rod Seal | HYTREL + PU | 1 |
| 15 | Guiding Band | Polyacetal | 1 |
| 16 | Guiding Bush | CSB-40 | 1 |
| 17 | Nut | Stainless Steel | 1 |

Note:

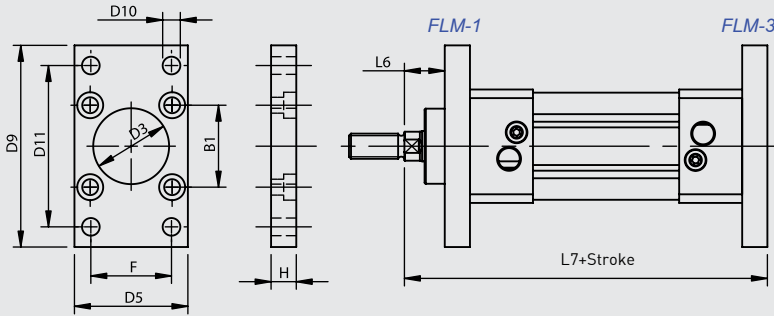
Dia 32: Instead of Cushioning Plastic is used Cushioning yellow and instead of Cushioning Plastic Female Thread is used Cushioning yellow Female Thread. (Material:Brass)

Dia 125: Instead of Cushioning Plastic is used Cushioning Aluminium and instead of Cushioning Plastic Female Thread is used Cushioning Aluminium Female Thread. (Material: Anodized Aluminium)

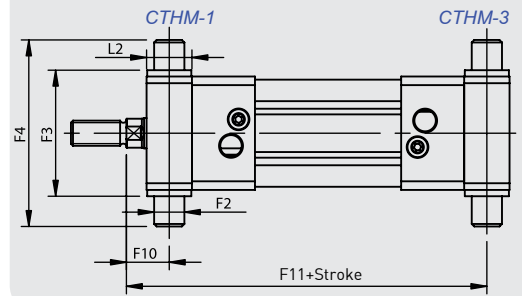


| Cylinder Ø mm | A | B | B1 | D Ø | D1 | D3 Ø | D4 | D5 | D6 Ø | D7 | L0 | L1 | L2 | L3 | L4 | L10 | L11 | SW | * |
|------------------|------|----|------|--------|----------|---------|-------|-----|---------|-----|-------|-----|------|----|------|-----|-----|----|-------|
| 32 | 30 | 22 | 32,5 | 12 | M10x1.25 | 30 | 59 | 45 | 46 | M6 | 116 | 94 | 18 | 4 | 25 | 120 | 146 | 10 | G1/8" |
| 40 | 34 | 24 | 38 | 16 | M12x1.25 | 35 | 70,2 | 54 | 53,7 | M6 | 129 | 105 | 20 | 4 | 27 | 135 | 165 | 13 | G1/4" |
| 50 | 41 | 32 | 46,5 | 20 | M16x1.5 | 40 | 84,2 | 65 | 65,7 | M8 | 138 | 106 | 28 | 4 | 29,5 | 143 | 180 | 17 | G1/4" |
| 63 | 42 | 32 | 56,5 | 20 | M16x1.5 | 45 | 99,5 | 76 | 80 | M8 | 152 | 121 | 27 | 4 | 34,5 | 158 | 195 | 17 | G3/8" |
| 80 | 52 | 40 | 72 | 25 | M20x1.5 | 45 | 123,8 | 94 | 101,8 | M10 | 167 | 128 | 34 | 4 | 35 | 174 | 220 | 22 | G3/8" |
| 100 | 52,5 | 40 | 89 | 25 | M20x1.5 | 55 | 148,8 | 112 | 125,9 | M10 | 182,5 | 138 | 38,5 | 4 | 38 | 189 | 240 | 22 | G1/2" |
| 125 | 73 | 54 | 110 | 32 | M27x2 | 60 | 179,5 | 134 | 155,5 | M12 | 213 | 160 | 46 | 6 | 44 | 225 | 290 | 27 | G1/2" |

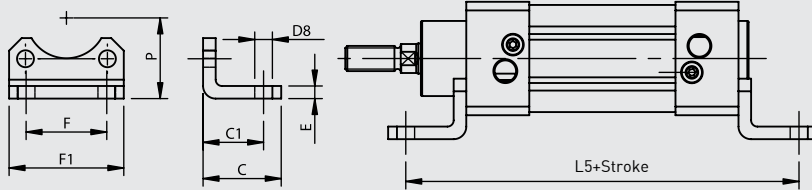
FLM Flange Mounting



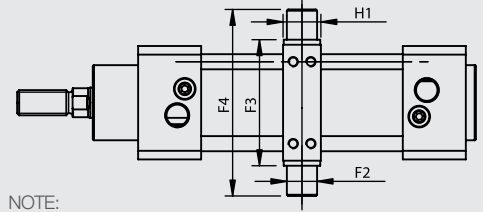
CTHM Central Trunnion Head Mounting



FM Foot Mounting

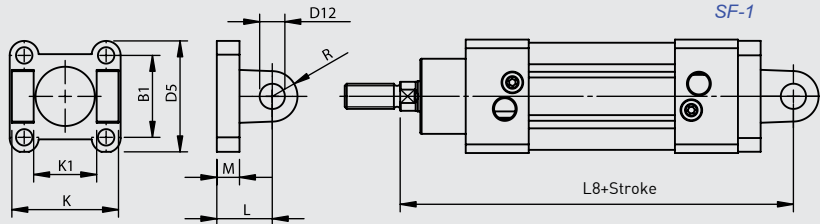


CTM-3 Central Trunnion Mounting

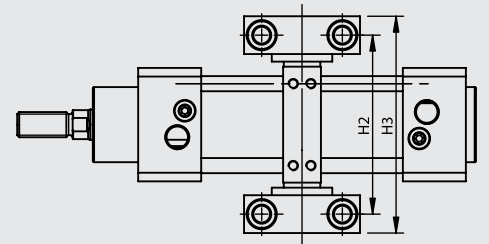


NOTE:
Adjustable CTM Connection for Models; Round Tube+Tie-Rod

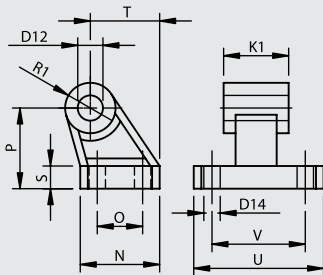
SF Swivel Flange



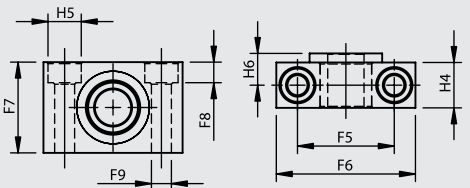
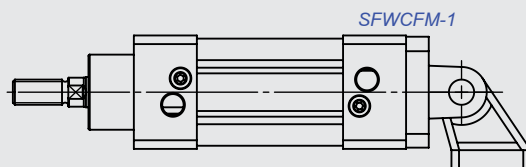
TSM Trunnion Support Mounting



CFM Clevis Foot Mounting



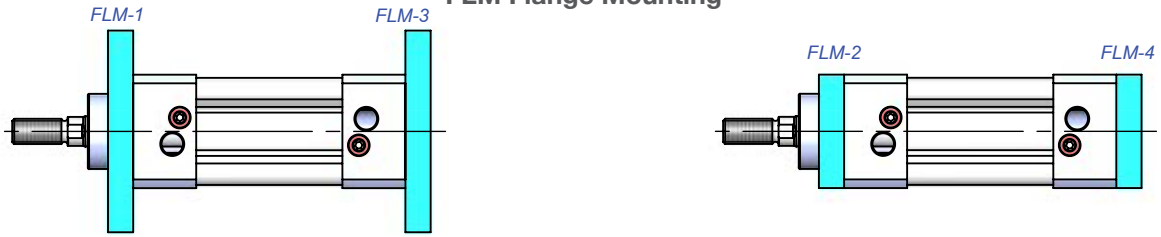
SFWCFM Swivel Flange with Clevis Foot Mounting



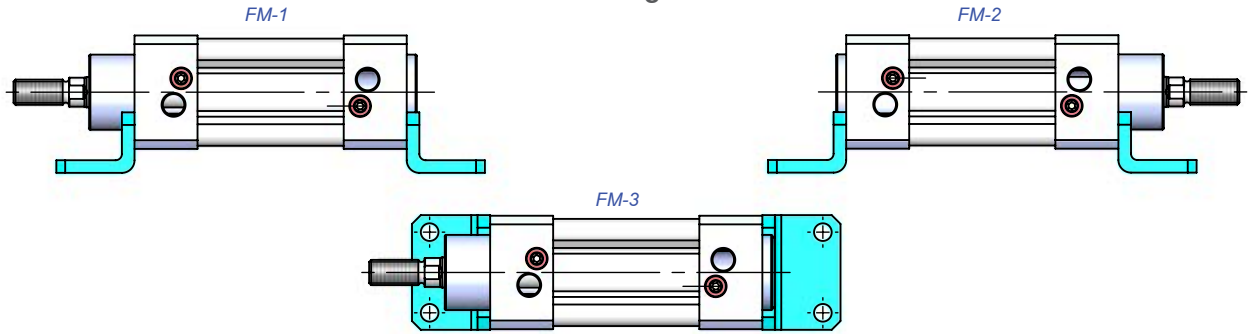
| Cylinder Ø mm | B1 | C | C1 | D3 Ø H11 | D5 | D8 Ø H14 | D9 | D10 Ø H13 | D11 JS14 | D12 Ø H9 | D14 Ø H13 | E | F | F1 | F2 Ø e9 | F3 h14 | F4 | F5 ±0,2 | F6 | F7 | F8 | F9 Ø H13 | F10 | F11 |
|------------------|------|----|----|----------------|-----|----------------|-----|-----------------|-------------|----------------|-----------------|---|----|------|---------------|-----------|-----|------------|----|----|-----|----------------|------|-------|
| 32 | 32.5 | 30 | 24 | 30 | 45 | 7 | 80 | 7 | 64 | 10 | 6.6 | 5 | 32 | 45.5 | 12 | 50 | 74 | 32 | 46 | 30 | 6.8 | 6.6 | 17 | 129 |
| 40 | 38 | 37 | 28 | 35 | 54 | 10 | 90 | 9 | 72 | 12 | 6.6 | 5 | 36 | 54.5 | 16 | 63 | 95 | 36 | 55 | 36 | 9 | 9 | 20 | 145 |
| 50 | 46.5 | 41 | 32 | 40 | 65 | 10 | 110 | 9 | 90 | 12 | 9 | 6 | 45 | 65 | 16 | 75 | 107 | 36 | 55 | 36 | 9 | 9 | 23 | 157 |
| 63 | 56.5 | 44 | 32 | 45 | 76 | 10 | 120 | 9 | 100 | 16 | 9 | 6 | 50 | 76 | 20 | 90 | 130 | 42 | 65 | 40 | 11 | 11 | 23.5 | 171.5 |
| 80 | 72 | 56 | 41 | 45 | 94 | 12 | 150 | 12 | 126 | 16 | 11 | 6 | 63 | 94 | 20 | 110 | 150 | 42 | 65 | 40 | 11 | 11 | 29 | 191 |
| 100 | 89 | 58 | 41 | 55 | 112 | 14 | 175 | 14 | 150 | 20 | 11 | 6 | 75 | 112 | 25 | 132 | 182 | 50 | 75 | 50 | 13 | 14 | 31.8 | 208.3 |
| 125 | 110 | 67 | 45 | 60 | 134 | 16 | 210 | 16 | 180 | 25 | 14 | 8 | 90 | 131 | 25 | 160 | 210 | 50 | 75 | 50 | 13 | 14 | 42 | 248 |

| Cylinder Ø mm | H | H1 | H2 | H3 | H4 | H5 Ø H13 | H6 | K h14 | K1 H14 | L | L2 | L5 | L6 | L7 | L8 | M | N | O JS14 | P JS16 | R | R1 | S | T | U | V JS14 |
|------------------|----|----|-----|-----|------|----------------|------|----------|-----------|----|------|-----|----|-----|-----|----|----|-----------|-----------|----|------|----|------|-----|-----------|
| 32 | 10 | 15 | 71 | 86 | 15 | 11 | 10.5 | 45 | 26 | 22 | 18 | 142 | 16 | 130 | 142 | 9 | 31 | 18 | 32 | 10 | 10 | 8 | 27.5 | 51 | 38 |
| 40 | 10 | 20 | 87 | 105 | 18 | 15 | 12 | 52 | 28 | 25 | 20 | 161 | 20 | 145 | 160 | 9 | 35 | 22 | 36 | 12 | 11 | 10 | 30.5 | 54 | 41 |
| 50 | 12 | 20 | 99 | 117 | 18 | 15 | 12 | 60 | 32 | 27 | 28 | 170 | 25 | 155 | 170 | 11 | 45 | 30 | 45 | 13 | 13 | 12 | 40.5 | 65 | 50 |
| 63 | 12 | 25 | 116 | 136 | 20 | 18 | 13 | 70 | 40 | 32 | 27 | 185 | 25 | 170 | 190 | 11 | 50 | 35 | 50 | 16 | 15 | 12 | 44.5 | 67 | 52 |
| 80 | 16 | 25 | 136 | 156 | 20 | 18 | 13 | 90 | 50 | 36 | 34 | 210 | 30 | 190 | 210 | 14 | 60 | 40 | 63 | 16 | 15 | 14 | 57 | 86 | 66 |
| 100 | 16 | 30 | 164 | 189 | 24.5 | 20 | 16 | 110 | 60 | 41 | 38.5 | 220 | 35 | 205 | 230 | 14 | 70 | 50 | 71 | 20 | 19 | 15 | 65 | 96 | 76 |
| 125 | 20 | 32 | 192 | 217 | 24.5 | 20 | 16 | 130 | 70 | 50 | 46 | 250 | 45 | 245 | 275 | 15 | 90 | 60 | 90 | 25 | 22.5 | 20 | 85 | 124 | 94 |

FLM Flange Mounting



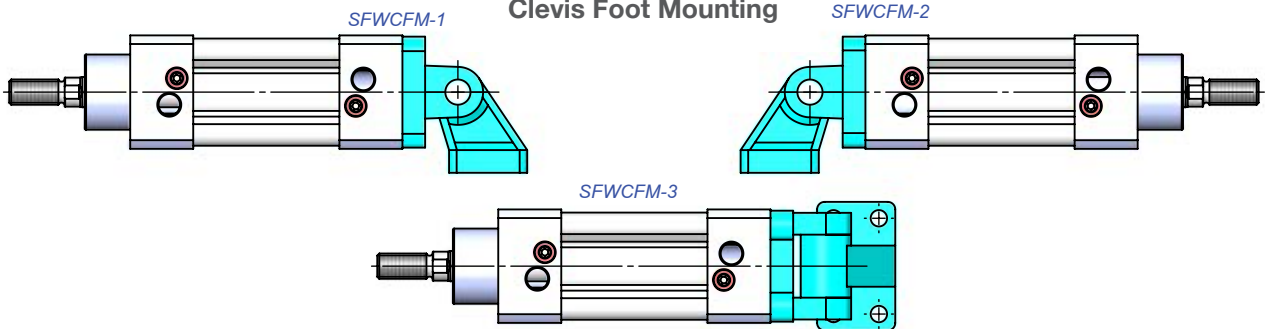
FM Foot Mounting



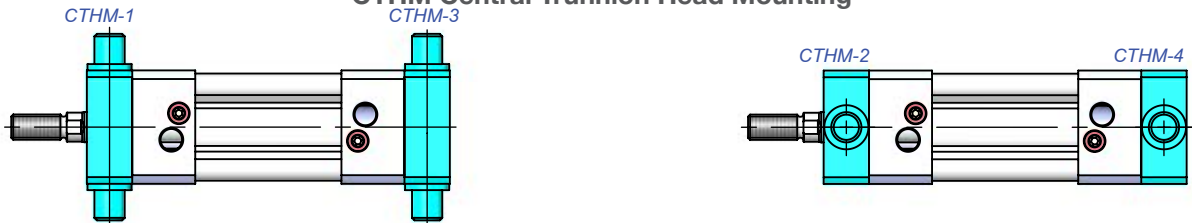
SF Swivel Flange



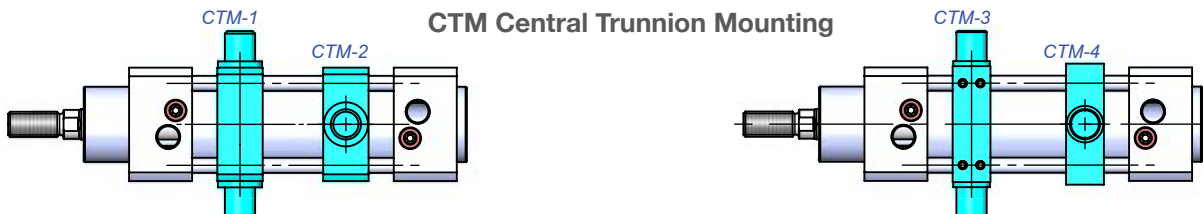
SFWCFM Swivel Flange with Clevis Foot Mounting



CTHM Central Trunnion Head Mounting

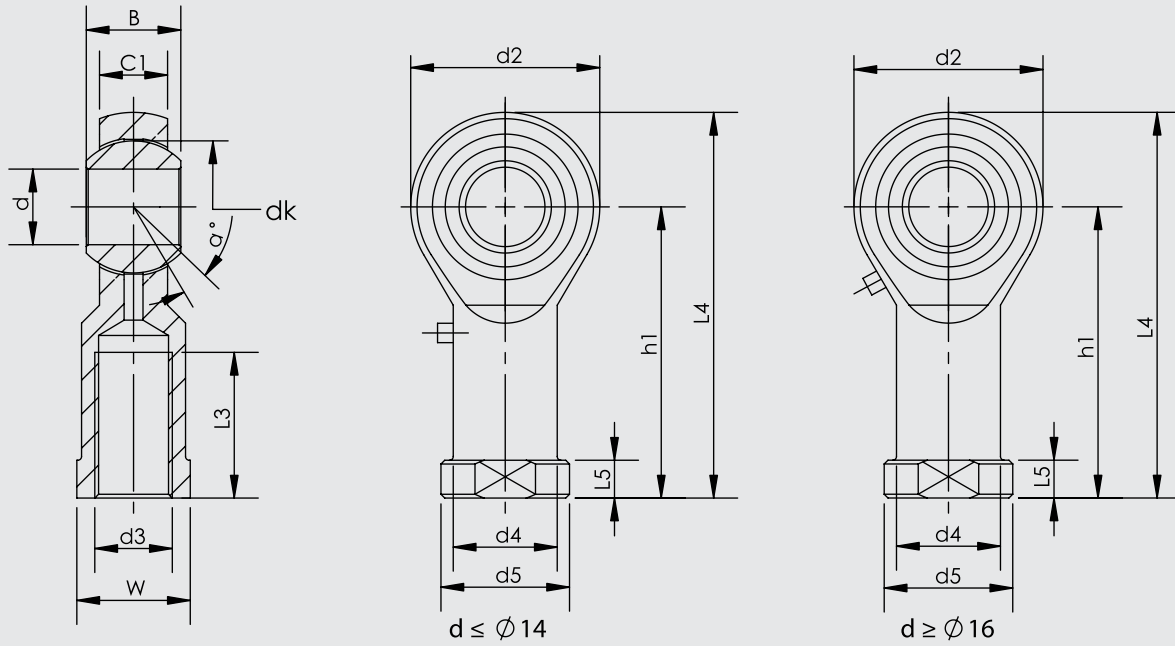


CTM Central Trunnion Mounting

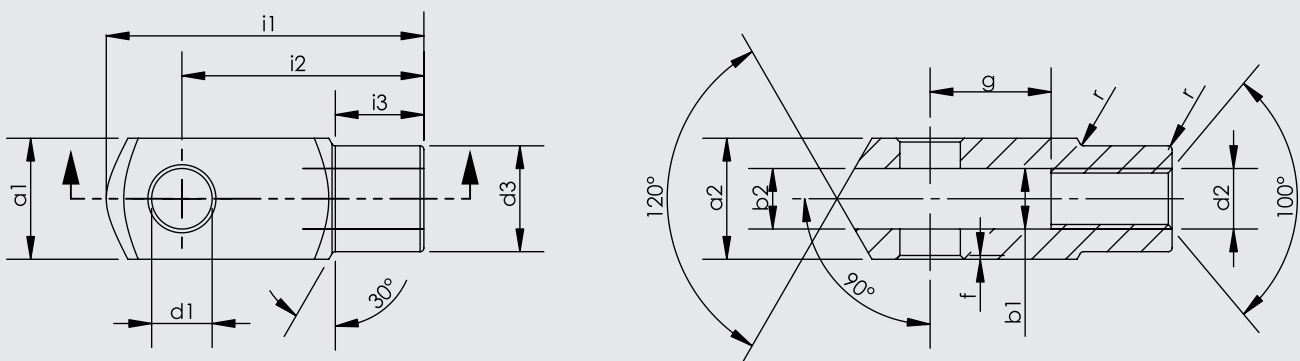


CTM-1-2 Fixed Connection

CTM-3-4 Adjustable Connection



| Part No. | Dimensions (mm) | | | | | | | | | | | | | |
|-----------|-----------------|------------|-----|------|-----|-------------|------|------|------|------|------|------|--------|-----------|
| | d | $d3$ 6H | B | $C1$ | W | $L3$ min | $d2$ | $L4$ | $h1$ | $L5$ | $d4$ | $d5$ | dk | a° |
| KMB 10 -1 | 10 | M10x1.25 | 14 | 10.5 | 17 | 20 | 26 | 56 | 43 | 6.5 | 15 | 19 | 19.05 | 13 |
| KMB 12 -1 | 12 | M12x1.25 | 16 | 12 | 19 | 22 | 30 | 65 | 50 | 6.5 | 17.5 | 22 | 22.225 | 13 |
| KMB 16 -1 | 16 | M16x1.5 | 21 | 15 | 22 | 28 | 40 | 84 | 64 | 8 | 22 | 27 | 28.575 | 15 |
| KMB 20 | 20 | M20x1.5 | 25 | 18 | 30 | 33 | 50 | 102 | 77 | 10 | 27.5 | 34 | 34.925 | 14 |
| KMB 28 | 28 | M27x2.0 | 35 | 24 | 41 | 48 | 66 | 136 | 103 | 14 | 37 | 46 | 47.6 | 15 |
| KMB 30-1 | 30 | M27x2.0 | 37 | 25 | 41 | 51 | 70 | 145 | 110 | 15 | 40 | 50 | 50.8 | 17 |
| KMB 30 | 30 | M30x2.0 | 37 | 25 | 41 | 51 | 70 | 145 | 110 | 15 | 40 | 50 | 50.8 | 17 |



| Cylinder \varnothing mm | $d1$ H9 | g $\pm 0,5$ | $a1$ h 11 | $a2$ $+0,3$ $-0,16$ | $b1$ B 13 | $b2$ | $d2$ 6H | $d3$ $\pm 0,3$ | f $\pm 0,2$ | $i1$ $\pm 0,5$ | $i2$ | $i3$ $\pm 0,2$ | r |
|------------------------------|------------|------------------|--------------|---------------------------|--------------|------|------------|-------------------|------------------|-------------------|------|-------------------|-----|
| 32 | 10 | 20 | 20 | 20 | 10 | 10 | M10x1.25 | 18 | 0.5 | 52 | 40 | 15 | 0.5 |
| 40 | 12 | 24 | 24 | 24 | 12 | 12 | M12x1.25 | 20 | 0.5 | 62 | 48 | 18 | 0.5 |
| 50 | 16 | 32 | 32 | 32 | 16 | 16 | M16x1.5 | 26 | 1 | 83 | 64 | 24 | 1 |
| 63 | 16 | 32 | 32 | 32 | 16 | 16 | M16x1.5 | 26 | 1 | 83 | 64 | 24 | 1 |
| 80 | 20 | 40 | 40 | 40 | 20 | 20 | M20x1.5 | 34 | 1.5 | 105 | 80 | 30 | 1.5 |
| 100 | 20 | 40 | 40 | 40 | 20 | 20 | M20x1.5 | 34 | 1.5 | 105 | 80 | 30 | 1.5 |
| 125 | 25 | 50 | 50 | 50 | 25 | 25 | M27x2 | 42 | 1.5 | 132 | 100 | 36 | 1.5 |